

# WASHINGTON STATE WOMEN'S COMMISSION

WA State Senior Citizens' Lobby | July 21<sup>st</sup>, 2025

# OUR HISTORY

*The Washington State Women's Commission was established on March 15, 2018, when House Bill 2759 was signed into law by Governor Jay Inslee.*

## Our Mission

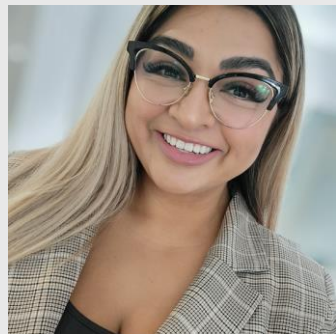
The Women's Commission works to address issues disproportionately affecting women and girls, particularly those from historically excluded communities. We connect with communities, gather data, and advise lawmakers and state agencies to ensure state policies and programs remove systemic barriers to women's health, safety, and economic well-being.

## Our Purpose

“The commission shall address issues relevant to the problems and needs of women, such as domestic violence, childcare, child support, sexual discrimination, sexual harassment, compensation and job pathways opportunities in employment, and the specific needs of women of color.”

Chapter 43.119 RCW

# COMMISSIONERS



**Andrea Carrillo**  
*Moses Lake*  
Early Education  
Policy



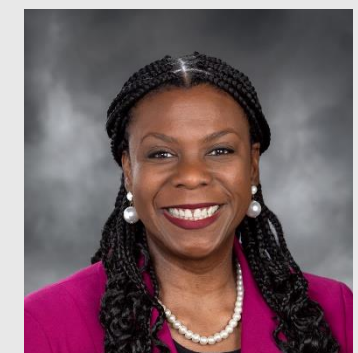
**Quinn Dalan**  
*Yakima*  
Legal Justice



**Allison Ford**  
*Tacoma*  
Public Policy



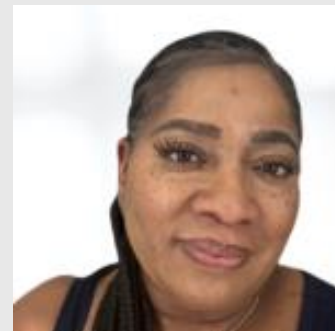
**Rep. Mary Dye**  
(R - District 9)



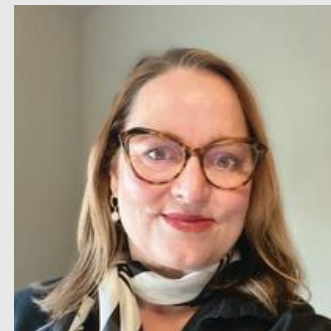
**Rep. Jamila Taylor**  
(D - District 30)



**Anna Franklin**  
*Spokane*  
Health Equity



**Yolanda  
King-Lowe**  
*Auburn*  
Labor Relations



**Chris Kobdish**  
*Bellingham*  
Health Equity



**Sen. Nikki Torres**  
(R - District 15)



**Sen. Lisa Wellman**  
(D - District 41)



**Vicki Lowe**  
*Sequim*  
Tribal Health



**Riddhi  
Mukhopadhyay**  
*Seattle*  
Gender-Based  
Violence  
& Legal Aid



**Malia Razzaia**  
*Kent*  
Economic Equity

# LEG. ADVISORS



# MEET THE TEAM



**Brittany Gregory**  
*Executive Director*



**Samantha Grono**  
*Public Policy & Legislative  
Affairs Manager*



**Tanzania Zenzali-  
Marshall**  
*Interagency & Relations  
Manager*



**Eliza Craig**  
*Communications &  
Outreach Manager*

# COMMITTEE WORK:

## Focus Areas | 2025-2026

### Health

*Lens: Cuts to Children's Health Insurance Program, Medicaid, Medicare*

- Bodily Autonomy & Reproductive Rights
- Menopause Education & Workplace Support
- Birth Equity

### Safety

- Safe Use of Technology & Data Privacy
- Impact Assessment –  
State & Federal Budget Cuts

**Learn More** - [wswc.wa.gov/about-committees](https://wswc.wa.gov/about-committees)

**Apply** – [Join a Committee](#)

# COMMITTEE WORK:

## Focus Areas | 2025-2026

### Economic Well-Being

- Childcare Access
- Non-Traditional Education
  - Financial Literacy & Retirement Preparation
  - Digital Skills
  - Trades

### Fundraising

#### HB 1012

Expanded authority of the Women's Commission to **solicit** gifts, grants, and endowments.

- Allows WSWC to diversify funding sources amid budget shortfall.

**Learn More** - [wswc.wa.gov/about-committees](https://wswc.wa.gov/about-committees)

**Apply** – [Join a Committee](#)

# COMMISSION POSITIONS OPENING

## 2025-2026

### **What Commissioners Do**

Shape state policy & programs to ensure that the voices of women, especially those from historically excluded communities, are at the center of Washington's decisions.

### **Terms & Service**

- Governor-appointed, unpaid volunteers from across the state.
- Commissioners serve for 3 years, with the option to apply for a second term.

**Learn More** - [wswc.wa.gov/apply-serve-womens-commission](https://wswc.wa.gov/apply-serve-womens-commission)

**Apply** – [Boards & Commissions Application](#)



# COMMISSION POSITIONS OPENING

## 2025-2026

### Eligibility

- Over 18 years old
- Live in Washington
- Identify as a woman

### Representation

We especially encourage applications from individuals with the following identities

- Live in Central or Eastern Washington
- Over the age of 30 or **65+**
- Identify as Native American
- Identify as an individual with a disability

**Learn More** - [wswc.wa.gov/apply-serve-womens-commission](https://wswc.wa.gov/apply-serve-womens-commission)

**Apply** – [Boards & Commissions Application](#)



# THANK YOU!

Email Me: [Eliza.craig@wswc.wa.gov](mailto:Eliza.craig@wswc.wa.gov)  
General Inbox: [wswc@wswc.wa.gov](mailto:wswc@wswc.wa.gov)



[Subscribe](#) to  
our Newsletter!



@WA\_WomensCommission



@WAWomensCommission



Washington State  
Women's Commission